

Very wide dynamic offset frequency range

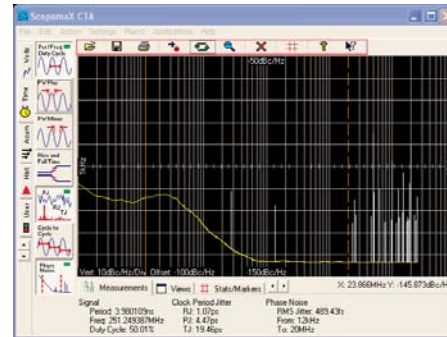
- Start frequency as low as 1kHz
- Stop frequency as high as  $F_{\text{carrier}}$ 
  - Not limited to 100MHz
  - Ex: 1GHz input = 1GHz range

Low noise floor

- -160dBc/Hz at 10MHz offset

### Measurement Parameters

- Plots phase noise curve
  - Smoothed or not
- Integrated RMS
  - User defined bands
  - 12kHz to 20MHz, etc.
- Time Jitter
  - RJ, PJ, TJ
- Spur detection
  - Selectable level
- Smoothing
  - Maintains spurs
  - Selectable aperture



Very stable time domain measurements are correlated against calculated perfect clock or Golden PLL software clock recovery

ScopemaX CTA software requires use of the ScopemaX hardware module with your real time scope



ScopemaX is a registered trademark of Gigamax Technologies Inc.